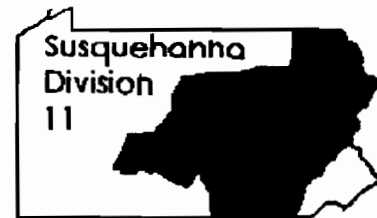


Susquehanna Sidetracks



Serving the Susquehanna Valley, MER, NMRA, Inc.

[HTTP://member.aol.com/mvmra/mvmra/nmra11.htm](http://member.aol.com/mvmra/mvmra/nmra11.htm)

NMRA/MER

Susquehanna Division 11 July - Sept 1997 JAN - MAR 1998 Vol. 6 No. 1

New Year and a New Layout

A site for the first Division 11 meet of 1998 has been selected and the host group has a new layout to show off. The meet will be at the headquarters of the South Penn Model Railroad Club at their new address: 520 North Charlotte Street, Lancaster, PA. The date is Saturday, February 28, 1998 from 9:00 AM until 4:00 PM. This time the club has heat.

They are working on a clinic for building benchwork: What to do and what not to do. This clinic will be in the afternoon. The morning clinic will be a presentation by a Conrail representative on Operation Lifesaver. He will be bringing tapes and handouts and there will be a question and answer session about railfanning. If you want answers to those questions about when where and how, this is the man to talk to.

Speaking of Conrail, the street that the club is located on is a railfanning location. Conrail has built a yard office at the end of the street and there is plenty of motive power to see from that location.

Other items on the agenda will include the popular vote model contest. Bring something along to enter. You can also get models judged there for the AP Program.

Light refreshments will be available at the club and there are many places to get some lunch.

Directions: If you are coming from the west, use the Harrisburg Pike exit of US 30 east to Lancaster. This exit also points you to F&M College. Pass the college to the railroad track that crosses Harrisburg Pike and turn right. This is a one-way street. It is Charlotte Street. The club will have signs out. There is plenty of parking right in front of the club. There is also a map included with this issue to show you the way.

Coming Events

February 28, 1998: Susquehanna Division 11 meet, South Penn Model Railroad Club, 520 North Charlotte Street, Lancaster, PA, 9:30 AM to 2:30 PM.

March 14, 1998: Hillendale's Spring Training Show by Hillendale PTO, 9 AM to 2 PM, Hillendale Elementary School, 1850 Hillendale Road, Chadds Ford, PA. Admission \$3 under 12 free. Info: Tom Marinelli, M-F, 8-4, 610-388-1439.

March 20, 1998: Conewago Valley Model Railroad Club Auction, New Oxford Fire Hall, New Oxford, PA from 7 PM until ?

March 21/22, 1998: Great American Train Show, King of Prussia, PA. 11 AM to 5 PM Sat & Sun.

April 23-26, 1998: Carolina Junction '98, MER Spring 1998 convention, Sheraton Airport Plaza Hotel, 3315 South I-85 at Billy Graham Parkway, Charlotte, North Carolina 28208.

April 26, 1998: Lancaster/Strasburg Train and Toy Show, 9 AM to 2 PM, Historic Strasburg Inn, Strasburg, PA. Admission \$3 and under 12 free. Info: Bill Siegler 717-392-5515

May 16, 1998: Susquehanna Division 11 meet, Steigel Valley Model Railroad Club, Manheim, PA, 9:30 AM to 2:30 PM

June 13, 1998: Tentative Susquehanna Division 11 meet.

June 21, 1998: The New and Old Train Show, presented by Tamaqua Anthracite Model RR Club at Tamaqua's Heritage Day, 8 AM to 3 PM, at Senior Citizen's Center, Tamaqua, PA. Donation \$2 or \$5 per family. Info: 717-645-9133

July 11, 1998: Tentative Susquehanna Division 11 meet.

July 20-26, 1998: 1998 NMRA National Convention, Heartland Express KC '98, Kansas City, KS

(Cont'd on page 4)

Division 11 Staff

Superintendent: Terry Nesbit, 5760 Union Deposit Road, Harrisburg, PA 17111-4708. Phone: 717-657-9476

Asst. Superintendent: Brian C. Brandt, 337 Bracken Drive, Lancaster, PA 17601. Phone: 717-560-9542 or 717-581-0647. Email: BrianB4717@aol.com or trains@redrose.net

Clerk/Paymaster: Paul F. Tice, 1709 West Market Street, York, PA 17404. Phone: 717-843-9572

Newsletter Editor: Don Yingling, 2420 Heather Road, York, PA 17404-4383. Phone: 717-764-2676. Email: trolley@trolley.com

Achievement Program Chairman: Terry Nesbit, 5760 Union Deposit Road, Harrisburg, PA 17111-4708. Phone: 717-657-9476

Scouting Merit Badge: York & Adams Counties: Alan Frame, 2430 Opal Road, York, PA 17404. Phone: 717-767-4998

Scouting Merit Badge: Cumberland, Perry & Dauphin Counties: David C. Buchanan, 118 Forest Drive, Camp Hill, PA 17011-8304. Phone: 717-737-7029.

Scouting Merit Badge: Lancaster, Lebanon & Berks Counties: Jeremy Griffith, 352 Broad Street, Terre Hill, PA 17581. Phone: 717-445-5183.

Division All-Scale Module Coordinator: Mel Agne, 48 Oakwood Drive, Delta, PA 17314. Phone: 717-862-3937.

Division Membership Chairman: Jim Atkinson, 120 Colebrook Road, Elizabethtown, PA 17022. Phone: 717-367-5626.

Division Web Master: Mel Agne, 48 Oakwood Drive, Delta, PA 17314. Phone: 717-862-3937.

Susquehanna Sidetracks is the official publication of the Susquehanna Division 11 of the Mid-Eastern Region of the National Model Railroad Association, Inc. Dues are \$2.00 per year payable to "Susquehanna Division 11". Remit dues to the Chief Clerk. Dues include subscription to the Division newsletter. Deadlines for submissions to the newsletter are the first day of each quarter: January 1 for Jan-Mar, April 1 for Apr-Jun; July 1 for Jul-Sep, and October 1 for Oct-Dec.

When remitting dues for the national and/or region, please provide photocopies of your current MER and NMRA membership cards, along with your Divisional membership renewal form. Also include the appropriate postage, 32 or 64 cents, with your check. This will help defray the cost of these additional mailings. Be sure that all information is correct and complete so dues can be properly credited to you.

Super's Corner

by Wm. Terry Nesbit

I apologize for the delay in getting out the Division's January newsletter. I have been trying to line up meeting places for our 1998 events. So far I have only three firm commitments: South Penn on February 28, Manheim on May 16 and Williams Grove Historical Steam Engine Association on August 15. I am trying to get the Mifflinburg Model Railroad Club for June, the Reading Society of Model Engineers for September, the Altoona Association of Model Railroaders or the club in Catasauqua (Allentown area) to host events in 1998.

Our first All-Scale Modular meet in November 1997 could have been better. The Division needs more volunteers for this event in 1998. Specifically, we need someone to head up the meet's advertising and public relations. In addition, I need inside workers to help out with sales and promoting the hobby.

I personally have donated over \$1000.00 to the Division, in materials, in order to complete the 4 corners and 2 four foot straight sections. This gives the division an operating HO Scale modular layout measuring 12 by 16 feet when set up for operation. I will be taking this layout to the Lebanon Train Show on 16/17 January (we won first place), to Howard Zane's show on January 31 and February 1, and the Great TRain Show on 21/22 March at Valley Forge. The Division will receive a dollar donation from these shows. These donations will bring dollars back to the Division to offset the start up costs of the All-Scale Modular Program. During the course of 1998, I will be taking the modules out to other shows which will increase our dollar balances to a level beyond what was spent on the construction of the 16 modules.

I have been talking to US Postal Inspectors concerning permitted advertising in publications using a non-profit mailing permit. The cost to the Division would be a one time fee of \$85.00. This would enable mailing of the newsletter to be reduced to 11.9 cents per piece. Currently we are paying 32 cents per piece and this will increase shortly. I am suggesting using a fee collected from advertisers to purchase the mailing permit and to cover the entire cost of the newsletter mailing. We would need 16 advertisers to cover this cost. I would like to hear from our members as to what you think about this idea.

On another matter, I have been almost impossible to reach since early October 1997. (Cont'd Page 3)

Editor's Notes

I am hoping this newsletter gets to everyone before the February meet at the South Penn Model Railroad Club. My evenings have gotten rather short since we had a little problem with 4 freon & air storage tanks at work. I work as an electronic technician in the maintenance department and we have gotten a tad bit busy since that happened. So I am running late getting this issue out the door.

I feel I have to borrow a bit of "editorial" material from Bob Charles. I remember his column about getting youths started in model railroading, sons and friends. My seven year-old is very interested in trains, with an ability to grasp the situation very quickly. As I am building my layout, his layout sits upstairs. It does not get run much. His has the horn-hook couplers and I have Kadee. He has learned how to use the uncoupling and delay feature and wants these couplers on all his equipment. What I am getting at is this. Since I allow him to operate my equipment while I am working on the railroad he has become able and very pleased that he can switch the yard, run a train to the first passing siding, and switch the sidings there. I don't have a complete loop yet but he and I are looking forward to that day.

This all boils down to giving youth a chance and the encouragement to enjoy the hobby. These are the adults of



tomorrow and the future driving force behind the NMRA, the MER, and Division 11. They need a chance to play and learn the what's, how's, and wherefore's of running model trains. Yes, he has come a long way from "How fast can they go Daddy?" It is no longer "How many trains do you have?" but how many engines, cars, etc.

Division 11 can do its part in furthering the youth in the hobby by showing off what we have done. The modules are different from the loop at home or visiting a club with a crowd of people. This is a chance to spur the interest and expand the horizons. This is when the adults get just as involved. We need to go to the shows with a lot of modules and a lot of help to answer the questions and point out the "what's, how's and wherefore's".

How many modules have you built or working on. Can you spare at least one day over a weekend to help out at a show? I know Terry could sure use the help. Think about it and get in touch with Terry either by mail or at the meet at the South Penn club.

To steal a phrase from a popular magazine: Model Railroading is fun. It can be even more fun with a group. Watch for the wide eyes and given the chance, watch our youth grow in the hobby.

See you at the meet. Don

Achievement Program

by Wm Terry Nesbit, A.P. Chair

Since October 1997, the division has submitted paperwork for 2 Golden Spike Awards and 2 Master Builder Scenery certificates. In addition, we have 2 other individuals working on their Dispatchers and Scenery certificates. Hopefully, these will be completed in time for issuance at the Carolina Junction '98 convention in April.

I always look forward to visiting a member's home and helping them out with the Achievement Program. Many of the categories can only be done at home. Please contact me, so I can make the necessary arrangements to judge and certify completion of the various areas covered in the NMRA's AP program.

Super's Corner *(Cont'd from page 2)*

I received a lightning strike near my home and this has caused untold problems with my telephones. Bell has replaced a section of line and the carbon fuses on the lightning protector coming into my house. However, I have some damage to my internal lines which is causing extreme static in the background. Until I can find the bad lines in the walls of my home, the telephone answering machine will not be turned on. If you need to reach me, it is best to drop me a postcard and I will call you from another phone, or I can be reached at work from 0800 to 1500 Monday through Friday at 717-790-2384.

Watch out for those trains and have a rail fun day.

Coming Events *(Cont'd from page 1)*

August 15, 1998: Division 11 event at Williams Grove Historical Steam Engine Association, Inc., Williams Grove, PA, 9:30 AM to 2:30 PM

September 12, 1998: Susquehanna Division 11 meet, Reading Society of Model Engineers and Model Railroad Explorers' Post #902, Reading, PA

September 23-28, 1998: 18th National Narrow Gauge Convention, World Arena Doubletree Hotel, Colorado Springs, CO

October 9-11, 1998: Lehigh Valley Limited, MER Fall

1998 Regional Convention, Days Inn Conference Center, Rts 22 & 309, Allentown, PA.

October 24, 1998: Quality check of All-Scale Modules, Harrisburg, PA, 9:30 AM to 2:30 PM.

November 14-15, 1998: Division 11 Train Show.

November 25, 1998: Conewago Valley Model Railroad Club Annual Fall Auction, New Oxford Fire Hall, New Oxford, PA, 7 PM until ?

December 12, 1998: Pennsylvania Rails, York Fairgrounds, Memorial Hall, York, PA, 9 AM to 4 PM.

Officer Elections

Elections for Division 11 officers are this year at the Manheim meet on May 16th. The following individuals have submitted their names to Jim Atkinson, who

volunteered to handle nominations.

For Superintendent: Wm. Terry Nesbit, Div. #R029.

Assistant Superintendent: Brian Brandt, Div. #R039.

Chief Clerk/Paymaster: Paul Tice, Div. #R003.

Membership Thermometer

Current Membership 02/06/98: 98

New Members:

Robert W. Bailey, Wellsboro, PA

Timothy I. Bittner, Lewisburg, PA

Roy Hoffman, Orrstown, PA

Bruce Allison, Lancaster, PA

John Auker, Mount Joy, PA

Robert L. Bolger, Fairfield, PA

William G., Hodges, New Cumberland, PA

Jim Miller, Camp Hill, PA

Gerald C. Hopkins, Hershey, PA

Donald L. Dixon, Elizabethtown, PA

Archer L. Morgan, Lancaster, PA

Dana Gleason, New Cumberland, PA

Robert H. Naurer, Harrisburg, PA

Renewals:

Bill Busch, Elizabethtown, PA

Mike Caum, Shrewsbury, PA

Philip Mellott, Lititz, PA

Brian Kampschroer, Mechanicsburg, PA

Tom Lowry, Brownstown, PA

Harold J. Stahle, Jr, Camp Hill, PA

Paul F. Tice, Thomasville, PA

Charles Potter, York, PA

Paul L. Schell, Leesport, PA

David Bailey, Hummelstown, PA

James A. Geltrude, Baltimore, MD

Wayne S. Betty, Mount Joy, PA

Michael B. Yingling, Harrisburg, PA

Bruce A. Guinn, New Holland, PA

Clarence E. Nissley, Palmyra, PA

SUSQUEHANNA DIVISION 11

1998 EVENTS CALENDAR

February 28, 1998: South Penn Model Railroad Club meet, Lancaster, PA 9:30 AM to 2:30 PM.

May 16, 1998: Steigel Valley Model Railroad Club meet, Manheim, PA (Spring meet and officer elections) 9:30 AM to 2:30 PM.

June 13, 1998: (Tentative) Lehigh Valley Model Railroad Association, Castasauqua, PA or Mifflinburg Model Railroad Club, Lewisburg, PA

July 11, 1998: (Tentative) Altoona Association of Model Railroaders and the Railroaders Memorial Museum, Altoona, PA

August 15, 1998: Williams Grove Historical Steam Engine Association, Inc., Williams Grove, PA, 9:30 AM to 2:30 PM (Summer picnic).

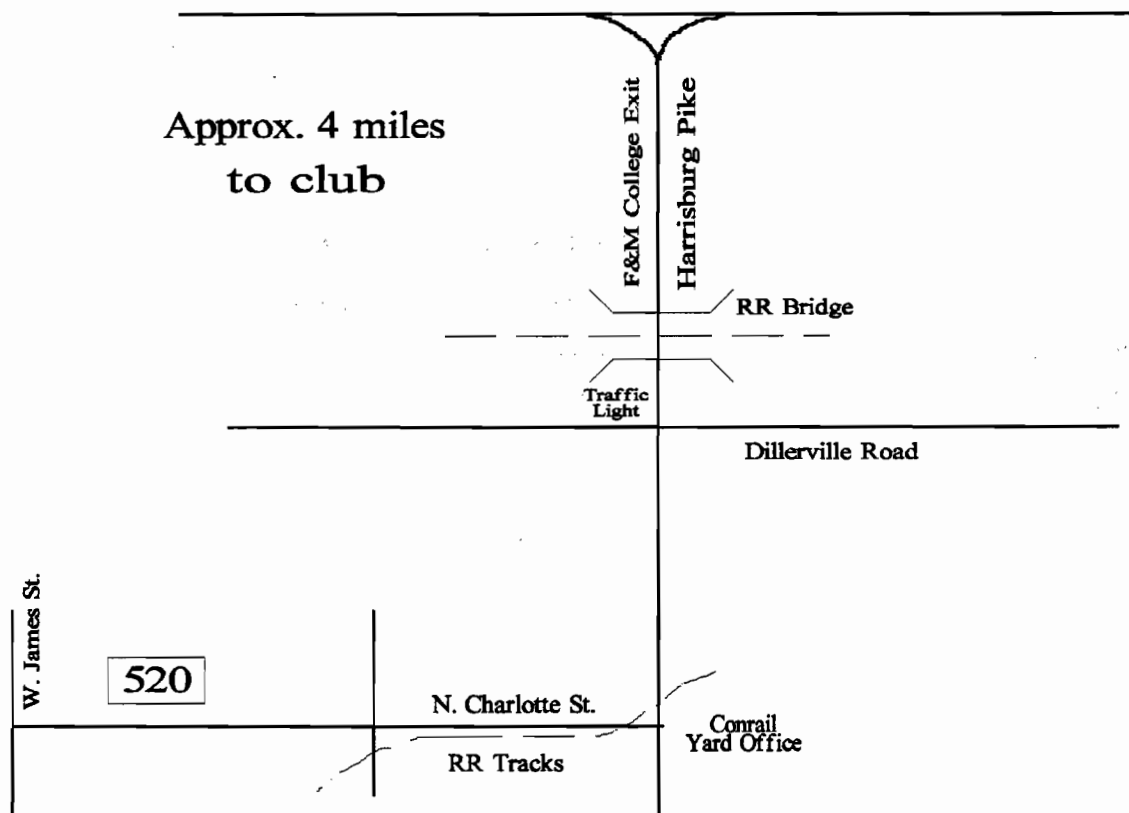
September 12, 1998: The Reading Society of Model Engineers and the Model Railroad Explorers Post #902, Reading, PA, 9:30 AM to 2:30 PM.

October 24, 1998: Wm. Nesbit's home. Quality check of any completed All-Scale Modules, rolling stock and/or motivepower, Harrisburg, PA, 9:30 AM to 2:30 PM.

November 14/15, 1998: (Tentative) Division Modular Train Show, Zembo Temple, Harrisburg, PA

Map to South Penn Model Railroad Club

US Rt. 30



Carolina Junction '98

**MID-EASTERN REGION SPRING CONVENTION
CHARLOTTE, NORTH CAROLINA**

April 23rd-26th, 1998

The Carolina
Southern Division,
Division Twelve
of the M&R, NMR&A, Inc.,
invites you to an exciting
98 Spring Convention.

Enjoy the mild
spring weather
in the piedmont area
of North Carolina.

**Register Today
for Special Fares and Rates!**

See Registration Form

LEAVE YOUR CAR AT HOME!

Modern busses that feature comfortable seats, VCR equipment, heat or air as needed, P.A. systems, and restrooms will take you on model and prototype railroad tours. No need to drive in an unfamiliar area, experienced drivers and tour guides will take you on many adventures that will fill your head with modeling projects for years to come.

ENJOY TOURS, both rail and non-rail, clinics, train show, auction, silent auction, social, banquet, breakfast ... all while staying at the Sheraton Airport Plaza Hotel in comfort with a special low convention rate.

YOU CAN RIDE THE TRAIN to the convention. A special rate is available to and from Charlotte from April 22nd to April 27th on

Amtrak's Carolinian. Enjoy a 15% discount off Amtrak's everyday low price only on the Carolinian and only for your convention. Use special fares order **x44p/948** and identify yourself as headed for Carolina Junction '98. Sheraton busses will take you from the train station or airport to the hotel with no charge, notification is needed. No matter how you arrive, no need for a car to enjoy your convention!

BRING THE FAMILY and stay, in comfort, at the Sheraton Airport Plaza Hotel with special low rate from April 22nd to April 27th, 1998. Arrive early for the convention and leave late. Register early, there are only 222 rooms at the Sheraton and the special rate is available only if reservations are made **before April 2, 1998.**

SPECIAL CONVENTION ROOM RATE \$65.00 a night plus taxes, fees and incidentals single or double occupancy. Please mention the Carolina Junction '98 convention when making your reservation.

For convention hotel reservations contact the hotel directly.

Sheraton Airport Plaza Hotel
3315 South I-85 at Billy Graham Parkway
Charlotte, North Carolina 28208
phone: 704-392-1200
fax: 704-393-2207

For convention and tour registrations contact registrar as below:

Dave Chance-Registrar
PO Box 3193
Concord, North Carolina 28025
e-mail: mchance@ctc.net
fax: 704-795-6410

CAROLINA JUNCTION '98, REGISTRATION

MID-EASTERN REGION SPRING CONVENTION, CHARLOTTE, NORTH CAROLINA, APRIL 23-26, 1998

NMRA# _____	MER# _____	Registration # _____
Name: _____		Registration includes unlimited entry to the train show and all clinics during the convention.
Address _____		
City/State/Zip _____		
phone # _____	Fax # _____	

Convention Registration:

	<u>Fare</u>	<u>X number</u>	<u>Total</u>
NMRA member, name _____	\$35 each	_____	_____
Spouse, name _____	\$15 each	_____	_____
Youth, name _____	\$10 each	_____	_____
Non NMRA, name _____	\$40 each	_____	_____

List additional attendees on a separate sheet and total fare for those so listed here _____

Social Activities:

Friday night social	\$10 each	_____	_____
Saturday banquet, Chicken	\$25 each	_____	_____
Saturday banquet, Beef	\$25 each	_____	_____
Sunday breakfast	\$12 each	_____	_____

Rail Tours:

#100 Pine Tree State Private Car	\$200 each	_____	_____
#200 Salisbury-Spencer, B-B-Q Chicken	\$45 each	_____	_____
#200 Salisbury-Spencer, B-B-Q Pork	\$45 each	_____	_____
#300 Duke Power Rotary Dumper	\$10 each	_____	_____
#302 Charlotte Trolley, Charlotte Electric Train	\$12 each	_____	_____
#306 L&C , SC rail museum, lunch, fried chicken	\$28 each	_____	_____
#306 L&C , SC rail museum, lunch, baked ham	\$28 each	_____	_____
#400 Charlotte Trolley	\$12 each	_____	_____

Non Rail Tours:

#201 Reeds Gold Mine, Cannon Village, McCabes, <u>steak</u>	\$25 each	_____	_____
#201 Reeds Gold Mine, Cannon Village, McCabes, <u>chicken</u>	\$25 each	_____	_____
#201 Reeds Gold Mine, Cannon Village, McCabes, <u>pasta</u>	\$25 each	_____	_____
#202 Reeds Gold Mine	\$12 each	_____	_____
#203 McCabes, lunch, <u>steak</u>	\$20 each	_____	_____
#203 McCabes, lunch, <u>chicken</u>	\$20 each	_____	_____
#203 McCabes, lunch, <u>pasta</u>	\$20 each	_____	_____
#204 Cannon Village Coupon Shopping	\$10 each	_____	_____
#301 Charlotte City Tour	\$10 each	_____	_____
#303 Stowe Botanical Gardens	\$10 each	_____	_____
#307 Speedway, Hickory house, Auto Museum	\$32 each	_____	_____
#308 Charlotte Motor Speedway	\$15 each	_____	_____
#309 Old Hickory House BBQ	\$20 each	_____	_____
#310 Auto Museum, Ready to Run Hobby	\$15 each	_____	_____

Layout Tours:

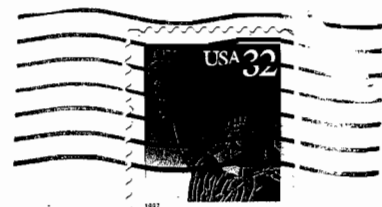
#205 Friday 8-12 noon	\$10 each	_____	_____
#206 Friday 1-5 pm	\$10 each	_____	_____
#207 Friday 7-11 pm	\$10 each	_____	_____
#304 Saturday 8-12 noon	\$10 each	_____	_____
#305 Saturday 1-5 pm	\$10 each	_____	_____
#401 Sunday 1-5 pm	\$10 each	_____	_____

Layout Operation Raffle:

#311 Saturday, 8:00 am-12:00 noon	\$15 each	_____	_____
#312 Saturday, 1:00 pm-5:00 pm	\$15 each	_____	_____
#313 Saturday, 8:00 am-12:00 noon	\$15 each	_____	_____
#314 Saturday, 1:00 pm-5:00 pm	\$15 each	_____	_____

Grand Total _____

Susquehanna Sidetracks
2420 Heather Road
York, PA 17404-4383



1997 R 002
ALAN FRAME
2430 OPAL ROAD
YORK, PA 17404

17404-4486 07

